

# SAP NetWeaver 7.0 (2004s)

Overview about IT Scenario  
Running an Enterprise  
Portal

SAP NetWeaver

Product Management, SAP AG

THE BEST-RUN BUSINESSES RUN SAP™



# SAP NetWeaver Technology Map

## IT Practices

## IT Scenarios

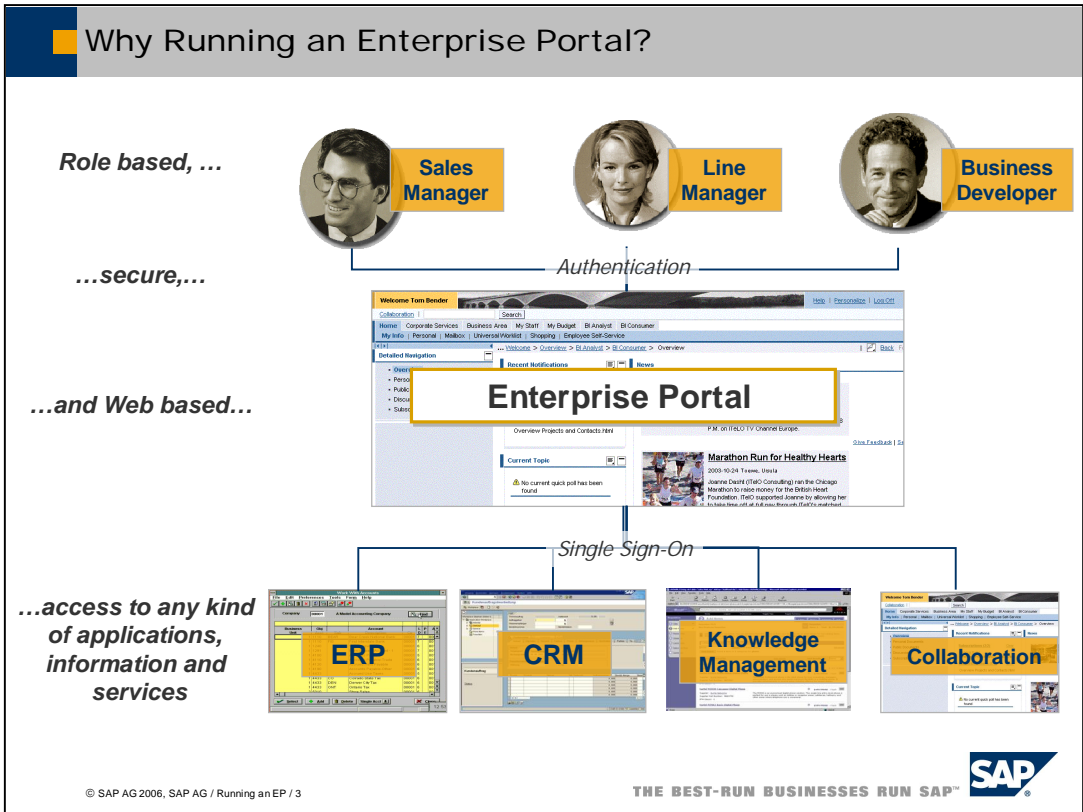
User Productivity Enablement	Running an Enterprise Portal	Enabling User Collaboration	Business Task Management	Mobilizing Business Processes	Enterprise Knowledge Management
Data Unification	Master-Data Harmonization	Master-Data Consolidation	Central Master-Data Management	Enterprise Data Warehousing	
Business Information Management	Enterprise Reporting, Query, and Analysis		Business Planning and Analytical Services	Enterprise Data Warehousing	
Business Event Management	Business Event Resolution			Business Task Management	
End-to-End Process Integration	Enabling Application-to-Application Processes	Enabling Business-to-Business Processes	Business Process Management	Enabling Platform Interoperability	Business Task Management
Custom Development	Developing, Configuring, and Adapting Applications			Enabling Platform Interoperability	
Unified Life-Cycle Management	Software Life-Cycle Management			SAP NetWeaver Operations	
Application Governance & Security	Authentication and Single Sign-On			Integrated User and Access Management	
Consolidation	Enabling Platform Interoperability	SAP NetWeaver Operations	Master-Data Consolidation	Enterprise Knowledge Management	
Enterprise Service Architecture – Design & Deployment	Enabling Enterprise Services				

**On the concept of IT Practices and IT Scenarios...**

© SAP AG 2006, SAP AG / Running an EP / 2

THE BEST-RUN BUSINESSES RUN SAP™





- SAP NetWeaver Portal provides **people-centric integration** of all types of enterprise information, including SAP applications, third-party applications, databases, data warehouses, desktop documents, and Web content and services. It provides employees, supply chain partners, customers, and other communities with **immediate, secure, and role-based access** to key information and applications across the extended enterprise.
- SAP NetWeaver Portal provides the end user with a uniform single point of access to the applications, services, and information they need for their daily work.

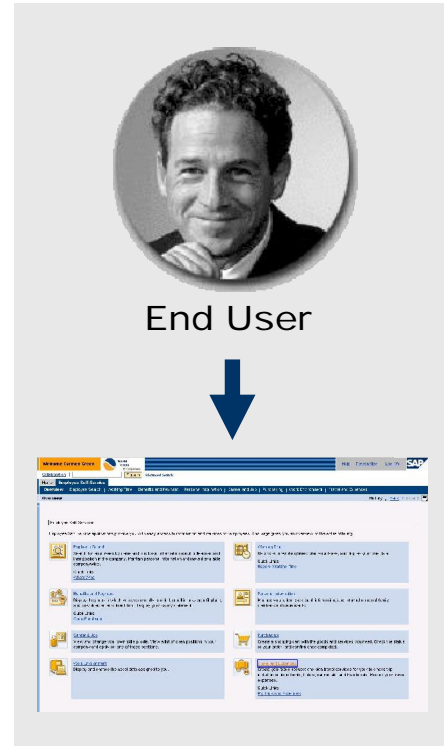
**SAP NetWeaver Portal provides end users a uniform**

**single point of access to**

- Applications
- Services and
- Information

**they need for their daily work.**

**Integrating Portal services into your business applications and processes provides a significant increase of productivity in your day-to-day work**



# The Basic Screen Elements of SAP NetWeaver Portal

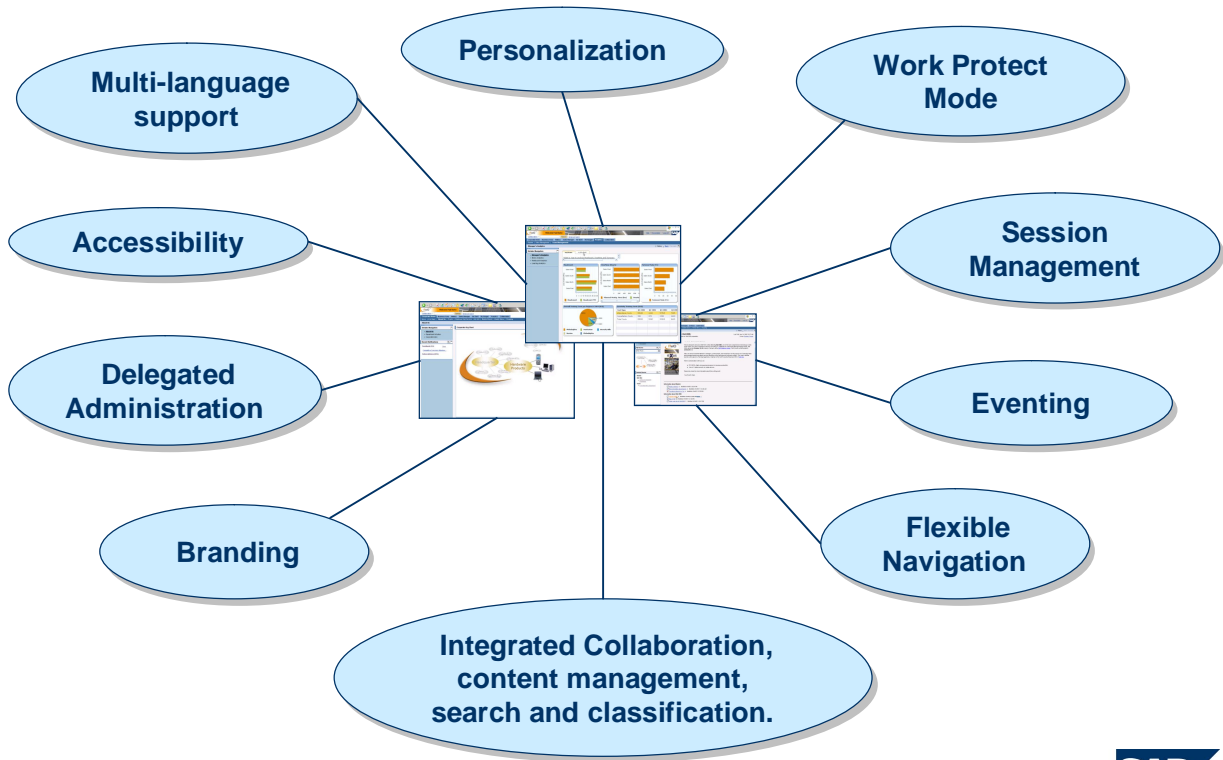
The screenshot displays the SAP NetWeaver Portal interface with several key components:

- Masthead & Tool Area:** Located at the top, it includes a user greeting "Welcome Tom Bender", a search bar, and the SAP logo.
- Top-Level Navigation:** A horizontal menu below the masthead with options like "Company", "Business Area", "Mailbox", "Manager Services", and "Employee Services".
- Navigation Panel:** A vertical sidebar on the left containing "Detailed Navigation" (with links to Corporate News, FAQ, Search, etc.) and "Corporate Links" (with links to CNN, e-business, etc.).
- Content Area:** The main central region featuring "Upcoming Events" (listing international and North America events), an "Expert Search" box, and a grid of news items such as "Prince Charles to Open ITelO Business Fair 2006" and "Employee Meeting: Coming Up Tomorrow, 4 P.M. - 6 P.M.".

© SAP AG 2006, SAP AG / Running an EP / 5

THE BEST-RUN BUSINESSES RUN SAP™

## Overview of Portal Capabilities



## Running an Enterprise Portal

### Providing uniform content access

- Integrate content into the portal
- Manage portal content

### Implementing a federated portal network

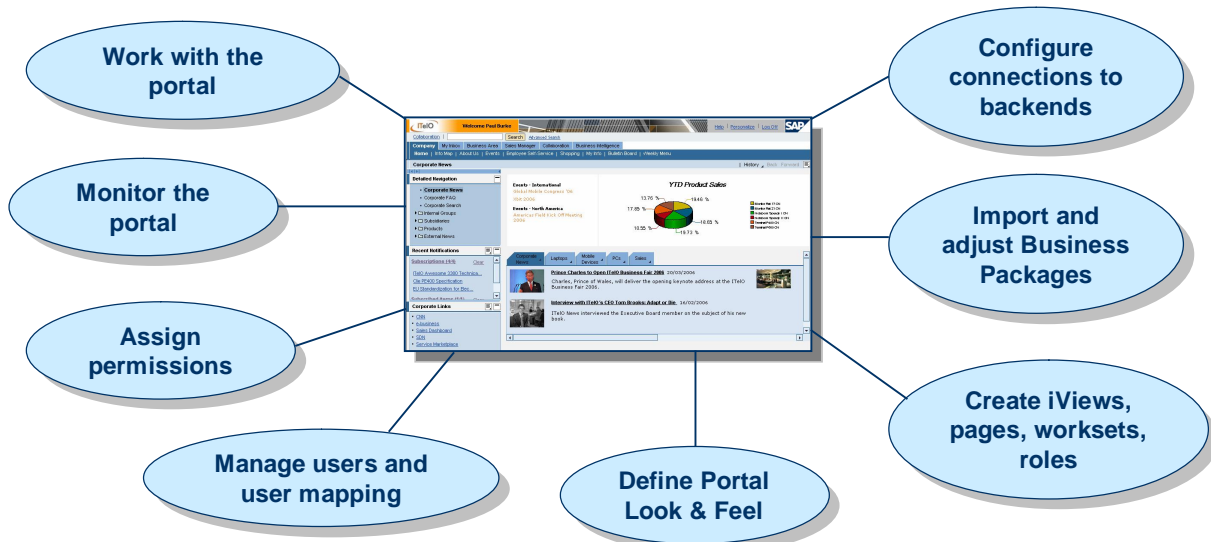
- Share content between SAP NetWeaver portals
- Use Web Services for Remote Portlets (WSRP)

### Implementing an external-facing portal

- Customize portal Look & Feel
- Adjust portal to performance and functionality requirements

## Providing Uniform Content Access

SAP NetWeaver Portal provides the end user with a uniform **single point of access to the applications, services, and information** they need for their daily work, increasing user productivity.



## External-Facing Portal

Welcome | Login | English

Abc Abc Abc

**iTelO**

Home | Products | Contact | Search: [ ]

You are here: Home > Who

**Who**

- Strategy
- Our Organization
- SAP and iTelO

### Who we are

Welcome to the iTelO Homepage. Here you can find all the information you need to do business with us. However, we are open for all kinds of enhanced business. Our goal is to reflect a trust like Mitsubishi, finally...

Our corporation's headquarter is in Munich, Germany. We have branches in many countries all over the world. Our corporation is organized in divisions for different products (e.g. mobile phones, devices). iTelO covers the whole value chain from Research and Development to production and distribution. You can get all the knowledge you need out of one hand... ThisThis

iTelO is selling directly to large customers and via wholesalers to end consumers. So, if you are interested in our products, log in our portal and visit our web shop.

Companies can use SAP NetWeaver Portal to **expose applications, services and information** over the internet to customers, partners and employees:

- **Web-like behavior**
- **Easy customization of the portal look & feel**
- **Improved network performance**

Copyright © 2007 iTelO Corp. All rights reserved. | Imprint | Terms of Use | Print this page | E-Mail this page

The portal includes a set of features that enable the use of the portal as an external-facing portal.

These features provide the following:

- **Web-like behavior**, such as the use of the standard browser buttons, such as *Back*, *Forward* and *Refresh*, for navigation.
- **Easy customization of the portal look and feel** with the use of tag libraries for creating navigation iViews and page layouts with custom iView trays.
- **Improved performance over the internet** by reducing the number of resources required for each request. An external-facing portal avoids the use of resource-heavy HTMLB and client-side eventing (EPCM).

## ■ Implementing an External-Facing Portal - Benefits

### Performance

- Reduce network traffic (JavaScript files, CSS, HTML)
- Reduce client-server round trips

### Web-like behavior

- Support of standard browser buttons
- Search engine indexing
- Navigation via standard URLs
- Openness to browsers

### Ease of customization

- JSP tag libraries enable easy customization of navigation iViews and iView trays

© SAP AG 2006, SAP AG / Running an EP / 10

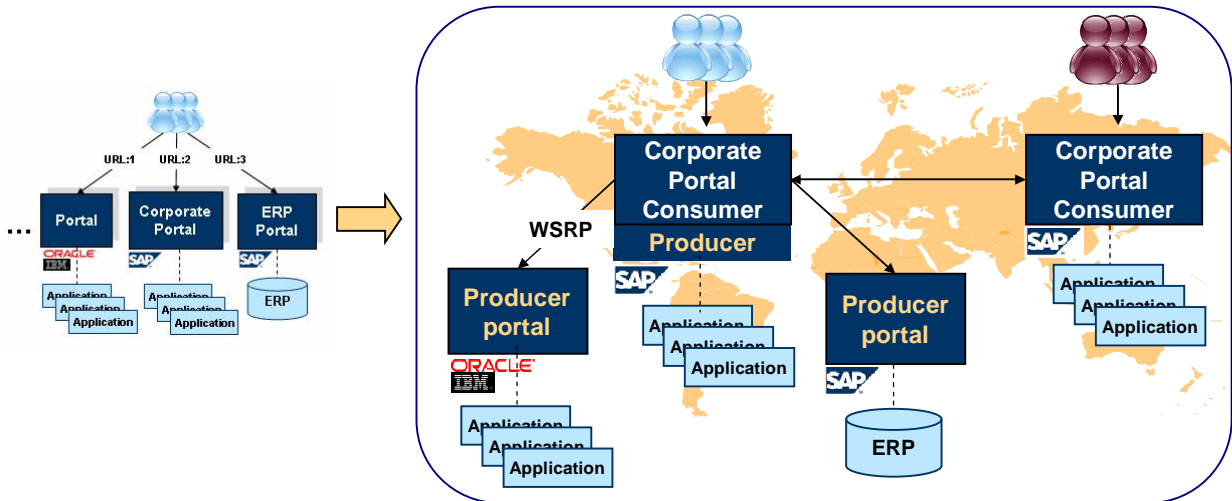
THE BEST-RUN BUSINESSES RUN SAP™



- These speaking points are all for this slide. They are broken into 4 clicks.
- The EFP is beneficial to customers who:
- Would like to [improve their portal performance](#)
- Would like to [create a website over the WWW](#) using the SAP NetWeaver portal platform
- Would like to [customize their portal look and feel](#) by customizing their navigation iViews and Framework pages
- Would like to [enable portal usage for employees in remote offices](#) connected via Low bandwidth networks

## Implementing a Federated Portal Network

A **Federated Portal Network (FPN)** allows organizations with multiple portals, SAP and non-SAP, to **share content** between the independent portals.



**Distributed portal landscape**

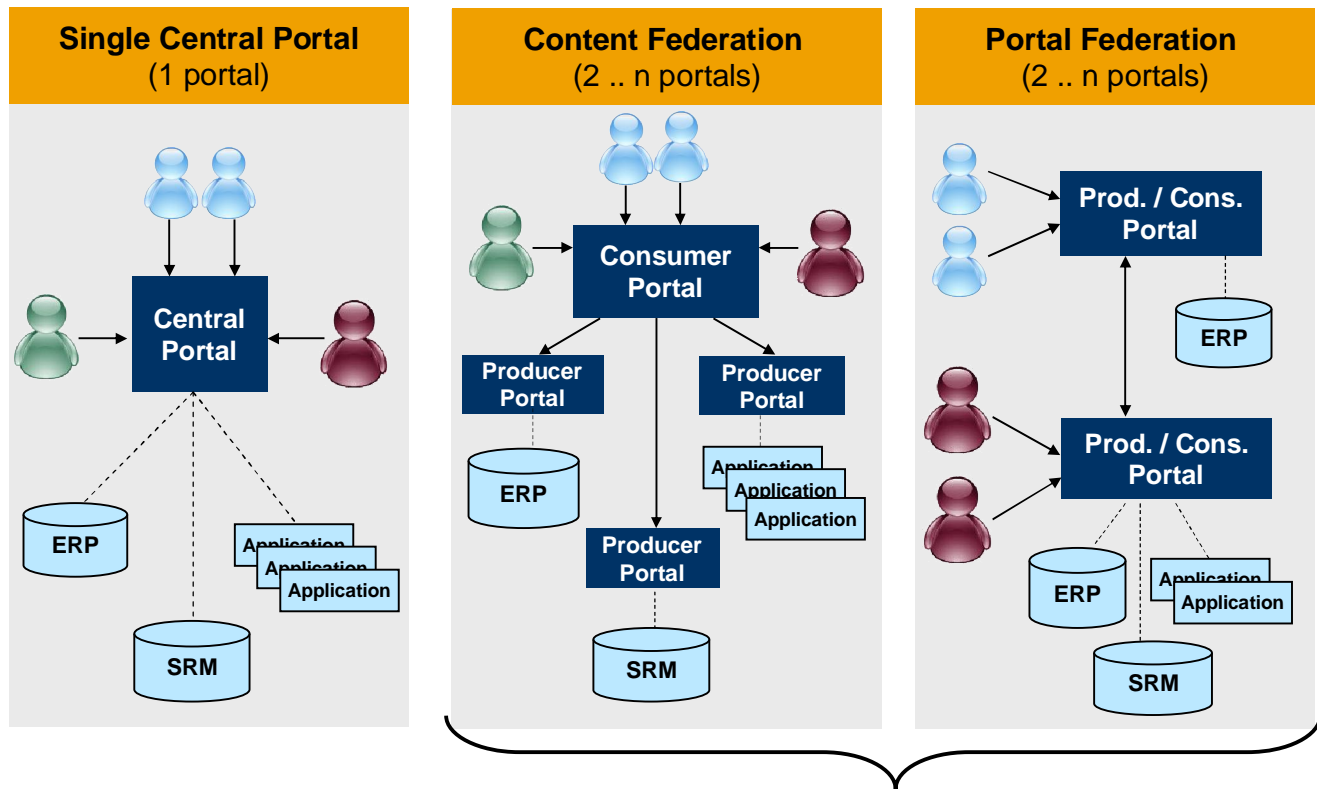
**Federated Portal Network**

© SAP AG 2006, SAP AG / Running an EP / 11

THE BEST-RUN BUSINESSES RUN SAP™



## Portal Landscapes



Enabled using the Federated Portal Network

© SAP AG 2006, SAP AG / Running an EP / 12

THE BEST-RUN BUSINESSES RUN SAP™



### ■ The federated portal network has two main implementation Scenarios:

- **Content Federation** - Your network comprises two or more portal installations
  - only one portal functions as the log-on portal for all users and the remaining portal installations function as producers of content.
- **Portal Federation** - each portal installation can function as an autonomous entity serving its own users, but also producing and consuming content to and from other portals in the federation. Portals can also rely completely on remote content from other portals, thus avoiding the need to create and maintain local content.

### General

- **Share content between WSRP-compliant portal servers from different vendors**
- **Content management, maintenance, and configuration is kept to an absolute minimum**

### Content Federation

- **One global portal for all company employees**
- **Easy integration of ERP content into the SAP NetWeaver Portal while maintaining a central portal for all company users.**

### Portal Federation

- **Units keep their business autonomy but at the same time utilize company resources and reduce total cost of ownership by sharing content and systems**

- No part of this publication may be reproduced or transmitted in any form or for any purpose without the express permission of SAP AG. The information contained herein may be changed without prior notice.
  - Some software products marketed by SAP AG and its distributors contain proprietary software components of other software vendors.
  - Microsoft, Windows, Outlook, and PowerPoint are registered trademarks of Microsoft Corporation.
  - IBM, DB2, DB2 Universal Database, OS/2, Parallel Sysplex, MVS/ESA, AIX, S/390, AS/400, OS/390, OS/400, iSeries, pSeries, xSeries, zSeries, z/OS, AFP, Intelligent Miner, WebSphere, Netfinity, Tivoli, and Informix are trademarks or registered trademarks of IBM Corporation in the United States and/or other countries.
  - Oracle is a registered trademark of Oracle Corporation.
  - UNIX, X/Open, OSF/1, and Motif are registered trademarks of the Open Group.
  - Citrix, ICA, Program Neighborhood, MetaFrame, WinFrame, VideoFrame, and MultiWin are trademarks or registered trademarks of Citrix Systems, Inc.
  - HTML, XML, XHTML and W3C are trademarks or registered trademarks of W3C®, World Wide Web Consortium, Massachusetts Institute of Technology.
  - Java is a registered trademark of Sun Microsystems, Inc.
  - JavaScript is a registered trademark of Sun Microsystems, Inc., used under license for technology invented and implemented by Netscape.
  - MaxDB is a trademark of MySQL AB, Sweden.
  - SAP, R/3, mySAP, mySAP.com, xApps, xApp, SAP NetWeaver and other SAP products and services mentioned herein as well as their respective logos are trademarks or registered trademarks of SAP AG in Germany and in several other countries all over the world. All other product and service names mentioned are the trademarks of their respective companies. Data contained in this document serves informational purposes only. National product specifications may vary.
- 
- The information in this document is proprietary to SAP. No part of this document may be reproduced, copied, or transmitted in any form or for any purpose without the express prior written permission of SAP AG.
  - This document is a preliminary version and not subject to your license agreement or any other agreement with SAP. This document contains only intended strategies, developments, and functionalities of the SAP® product and is not intended to be binding upon SAP to any particular course of business, product strategy, and/or development. Please note that this document is subject to change and may be changed by SAP at any time without notice.
  - SAP assumes no responsibility for errors or omissions in this document. SAP does not warrant the accuracy or completeness of the information, text, graphics, links, or other items contained within this material. This document is provided without a warranty of any kind, either express or implied, including but not limited to the implied warranties of merchantability, fitness for a particular purpose, or non-infringement.
  - SAP shall have no liability for damages of any kind including without limitation direct, special, indirect, or consequential damages that may result from the use of these materials. This limitation shall not apply in cases of intent or gross negligence.
  - The statutory liability for personal injury and defective products is not affected. SAP has no control over the information that you may access through the use of hot links contained in these materials and does not endorse your use of third-party Web pages nor provide any warranty whatsoever relating to third-party Web pages.

